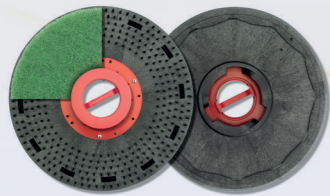


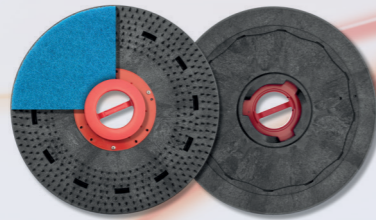
The Perfect fit

A simple, effective and easy to use system that brings vast improvements when using pads with the Numatic Floorcare range. Pads are located securely and perfectly centred every time and all the time!

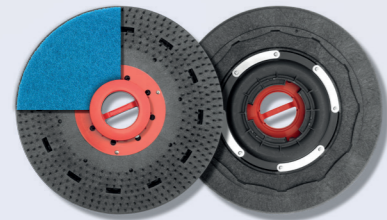
Floor machine range



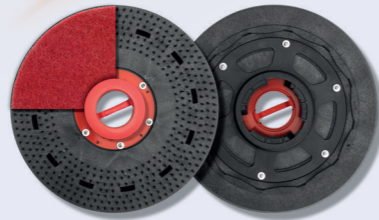
1 360mm ø PadLoc



2 400mm ø PadLoc



3 400mm ø Flexi PadLoc



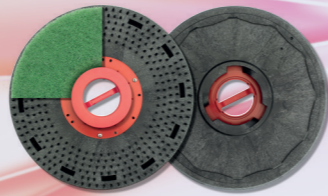
4 400mm ø Spider PadLoc



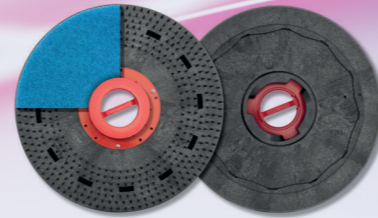
5 500mm ø PadLoc



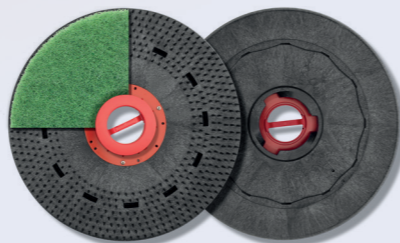
TwinTec/Vario machine range



6 360mm ø PadLoc



7 11 400mm ø PadLoc



8 460mm ø PadLoc



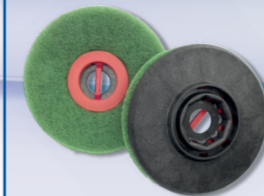
9 12 500mm ø PadLoc



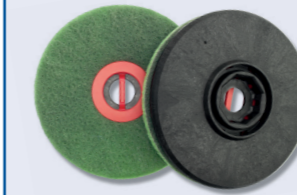
10 600mm ø PadLoc



Vario machine range



13 280mm ø Octo PadLoc
(2 required 55 width)



14 330mm ø Octo PadLoc
(2 required 65 width)



15 300mm ø Octo PadLoc
(3 required all widths)



PadLoc... Performance Plus

Anyone who has used pads will know the frustration that can come with pads fitted incorrectly, moving and just not wanting to stay on the drive board!

Easy to put on.....and central

Easy to use.....they stay on

Easy to turnover.....even dirty pads stay on

Easy to take off.....just one click away

PadLoc, never simpler – never better.

A simple pad drive locking system that gives you exactly what is needed.



PadLoc data

Floor machine range

Ref	Part N°	PadLoc type	Fits with Models
1	606400	360mm	HFS1015/HFS1023
2	606401	400mm	NR1500S/NPR1515S/NPR1523M
2	606401	400mm	HFM1015/HFM1023/HFM1515/HFM1523
3	606411	400mm Flexi	NPR1530H/NRT1530/NR1500H
3	606411	400mm Flexi	HFM1530/HFT1530
4	606412	400mm Spider	NPR1545X/NRS450
4	606412	400mm Spider	HFM1545
5	606403	500mm	NRL1500S

TwinTec machine range

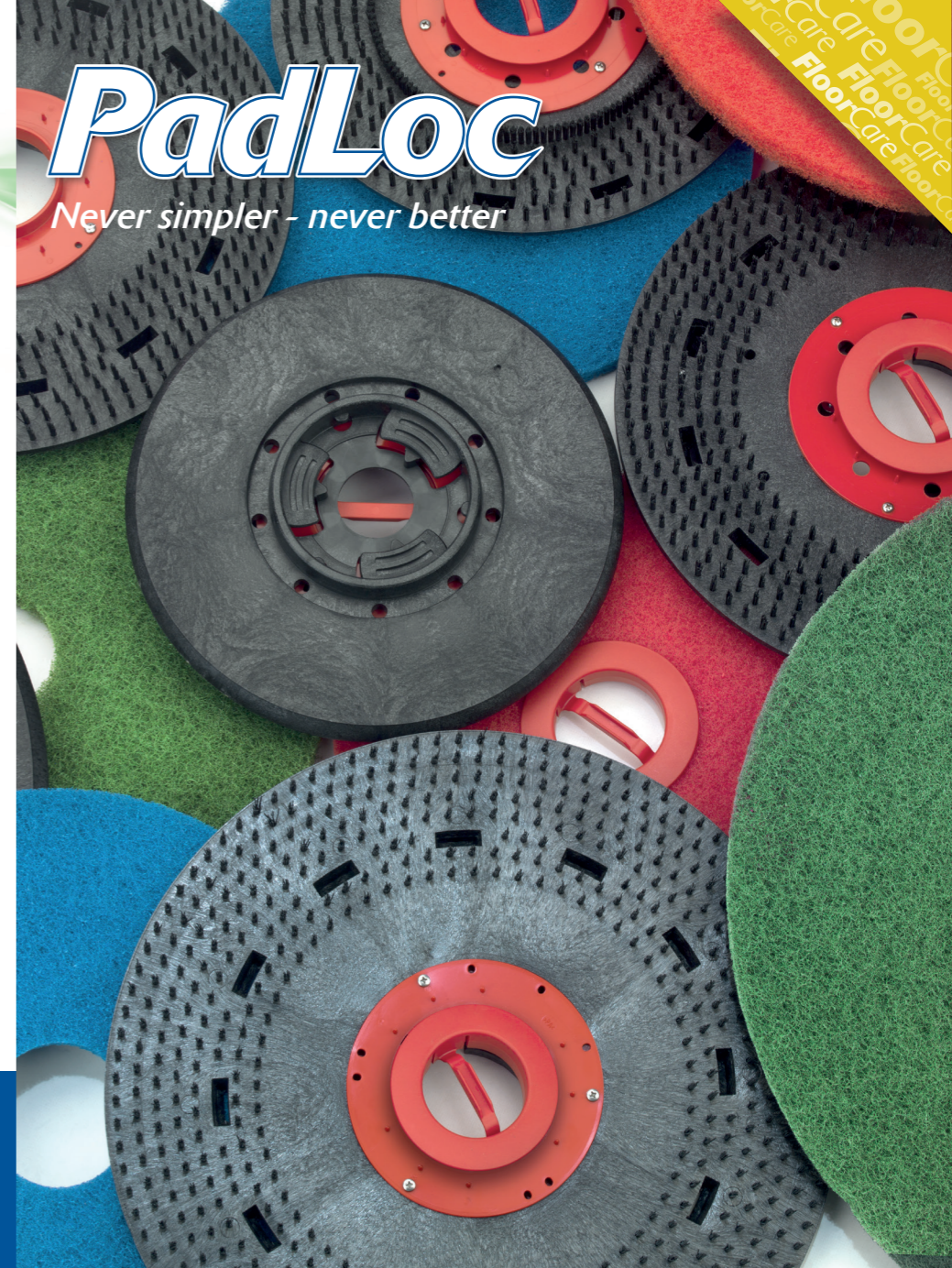
Ref	Part N°	PadLoc type	Fits with Models
6	606400	360mm	TT/TTB1840
7	606401	400mm	TT/TTB3450
7	606401	400mm	TT/TTB4045, ET/ETB4045
8	606402	460mm	TT/TTB4500
9	606403	500mm	TT4550S/TTB4550S/TTB4550ST
9	606403	500mm	TTB4055/TTB4055T TTB6055 & TTB6055T
10	606404	600mm	TT-6650

Vario machine range

Ref	Part N°	PadLoc type	Fits with Models
11	606401	400mm	TTV4555 (1 required 45 width)
12	606403	500mm	TTV4555 (1 required 55 width)
13	606405	280mm Octo	TTV5565 (2 required 55 width)
14	606407	330mm Octo	TTV5565 (2 required 65 width)
15	606406	300mm Octo	TTV678 (3 required all widths)

PadLoc

Never simpler – never better



www.numatic.co.uk

www.numatic.fr

www.numatic.de

www.numatic.nl

www.numatic.ch

www.numatic.co.za

Numatic International Limited, Chard, Somerset, TA20 2GB Tel: 01460 68600 Fax: 01460 68458
Numatic International Limited 2012. Specification subject to change without prior notice. 244106/1012